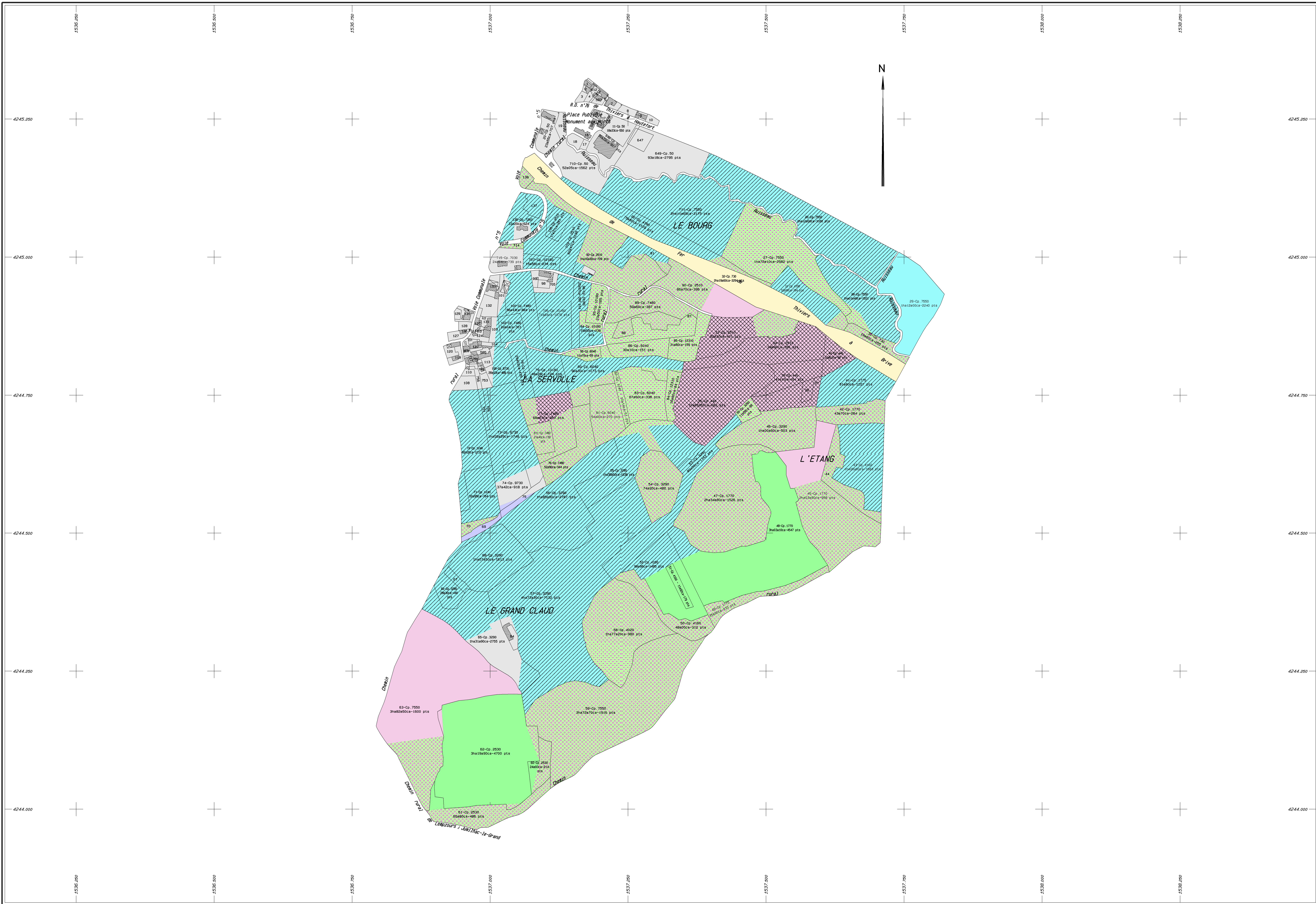


EYZERAC (Dordogne)

Section EYZERAC-C1



PARCELLES SITUÉES SUR LA COMMUNE DE EYZERAC		
C 1 - Co. 4360 41 pts.	16380e	
C 2 - Co. 2900 42 pts.	16410e	
C 3 - Co. 2900 41 pts.	16700e	
C 4 - Co. 1740 53 pts.	16780e	
C 7 - Co. 6670 123 pts.	48100e	
C 8 - Co. 6670 126 pts.	48200e	
C 9 - Co. 2380 85 pts.	26820e	
C 10 - Co. 2380 84 pts.	26780e	
C 12 - Co. 7230 17 pts.	06550e	
C 13 - Co. 7230 6 pts.	06200e	
C 15 - Co. 7230 41 pts.	16380e	
C 16 - Co. 50 81 pts.	86560e	
C 17 - Co. 50 61 pts.	26040e	
C 18 - Co. 50 152 pts.	56400e	
C 19 - Co. 50 215 pts.	76170e	
C 21 - Co. 50 11 pts.	06250e	
C 37 - Co. 3290 142 pts.	356500e	
C 38 - Co. 3290 26 pts.	66610e	
C 44 - Co. 4160 215 pts.	436000e	
C 64 - Co. 3290 220 pts.	76330e	
C 67 - Co. 3290 103 pts.	66880e	
C 69 - Co. 1240 40 pts.	86000e	
C 70 - Co. 1240 39 pts.	76500e	
C 75 - Co. 9730 182 pts.	06800e	
C 87 - Co. 7480 213 pts.	426600e	
C 88 - Co. 7480 126 pts.	256100e	
C 91 - Co. 2510 354 pts.	294600e	
C 98 - Co. 10180 84 pts.	26790e	
C 99 - Co. 10180 237 pts.	76900e	
C 101 - Co. 7480 220 pts.	86630e	
C 103 - Co. 7480 180 pts.	76430e	
C 104 - Co. 9740 68 pts.	36030e	
C 108 - Co. 1240 267 pts.	86930e	
C 109 - Co. 1240 1 pts.	06010e	
C 110 - Co. 1240 14 pts.	26470e	
C 113 - Co. 9730 91 pts.	36030e	
C 116 - Co. 440 38 pts.	16270e	
C 117 - Co. 1240 33 pts.	16100e	
C 118 - Co. 50 77 pts.	26560e	
C 119 - Co. 1470 179 pts.	56950e	
C 120 - Co. 1470 126 pts.	46190e	
C 121 - Co. 90 37 pts.	16230e	
C 122 - Co. 9740 140 pts.	46850e	
C 123 - Co. 9740 18 pts.	06630e	
C 124 - Co. 7480 191 pts.	66350e	
C 125 - Co. 440 150 pts.	56080e	
C 126 - Co. 7480 34 pts.	16130e	
C 127 - Co. 7480 128 pts.	46250e	
C 128 - Co. 440 98 pts.	36270e	
C 129 - Co. 12000 62 pts.	26080e	
C 130 - Co. 12000 181 pts.	66030e	
C 131 - Co. 7480 108 pts.	36600e	
C 132 - Co. 7480 315 pts.	106500e	
C 133 - Co. 7480 256 pts.	06530e	
C 137 - Co. 7260 170 pts.	116300e	
C 138 - Co. 2900 32 pts.	66400e	
C 583 - Co. 50 48 pts.	16590e	
C 585 - Co. 9730 106 pts.	46190e	
C 587 - Co. 1740 77 pts.	26560e	
C 590 - Co. 4360 11 pts.	06380e	
C 591 - Co. 1740 12 pts.	06400e	
C 612 - Co. 1740 60 pts.	26000e	
C 613 - Co. 1740 70 pts.	26350e	
C 614 - Co. 1740 8 pts.	06250e	
C 615 - Co. 1740 9 pts.	06250e	
C 646 - Co. 50 22 pts.	06760e	
C 647 - Co. 50 308 pts.	106600e	
C 705 - Co. 10180 180 pts.	86160e	
C 712 - Co. 7230 23 pts.	06780e	
C 713 - Co. 7230 21 pts.	06710e	
C 714 - Co. 710 19 pts.	06500e	
C 716 - Co. 50 32 pts.	16060e	
C 717 - Co. 7230 86 pts.	26870e	
C 749 - Co. 9400 46 pts.	16500e	
C 750 - Co. 9400 78 pts.	56230e	
C 751 - Co. 9390 83 pts.	56530e	
C 752 - Co. 9400 16 pts.	06500e	
C 753 - Co. 9400 108 pts.	46280e	
C 754 - Co. 9410 27 pts.	06880e	
C 755 - Co. 9390 67 pts.	26240e	
C 756 - Co. 9390 103 pts.	36420e	

LEGENDE			
SOL - 3000 Points/ha	B12 - 1900 Points/ha	LR2 - 4500 Points/ha	B36 - 1200 Points/ha
ETA - 1500 Points/ha	B13 - 1400 Points/ha	LR3 - 4000 Points/ha	B40 - 3000 Points/ha
VIG - 1500 Points/ha	B14 - 1900 Points/ha	NDY - 3000 Points/ha	B58 - 400 Points/ha
TRU - 3000 Points/ha	B15 - 1400 Points/ha	P3 - 1500 Points/ha	B59 - 400 Points/ha
RFF - 1500 Points/ha	B16 - 2000 Points/ha	P4 - 2000 Points/ha	B60 - 400 Points/ha
VLR - 1500 Points/ha	B17 - 1900 Points/ha	P5 - 1000 Points/ha	B41 - 500 Points/ha
CHE - 500 Points/ha	B18 - 2300 Points/ha	P6 - 1500 Points/ha	B42 - 500 Points/ha
PR1 - 2000 Points/ha	B19 - 1900 Points/ha	P7 - 800 Points/ha	B43 - 500 Points/ha
PR2 - 1500 Points/ha	B20 - 2400 Points/ha	P8 - 2200 Points/ha	B44 - 500 Points/ha
PR3 - 0 Points/ha	B21 - 2000 Points/ha	P9 - 800 Points/ha	F11 - 500 Points/ha
T1 - 2500 Points/ha	B22 - 2000 Points/ha	P10 - 1800 Points/ha	F12 - 500 Points/ha
T2 - 2000 Points/ha	B23 - 2000 Points/ha	P11 - 900 Points/ha	F13 - 500 Points/ha
T3 - 1500 Points/ha	B24 - 3000 Points/ha	P12 - 3000 Points/ha	F14 - 500 Points/ha
T4 - 0 Points/ha	B25 - 2100 Points/ha	P13 - 2400 Points/ha	F15 - 500 Points/ha
CDU - 800 Points/ha	B26 - 1400 Points/ha	P14 - 1200 Points/ha	B45 - 700 Points/ha
F1 - 1200 Points/ha	B27 - 1500 Points/ha	P15 - 3500 Points/ha	B46 - 700 Points/ha
F2 - 1200 Points/ha	B28 - 1800 Points/ha	P16 - 2800 Points/ha	B47 - 700 Points/ha
F3 - 1300 Points/ha	F4 - 1200 Points/ha	P17 - 1300 Points/ha	B48 - 700 Points/ha
M1 - 1500 Points/ha	F5 - 1200 Points/ha	P18 - 4500 Points/ha	B49 - 700 Points/ha
M2 - 1300 Points/ha	F6 - 1400 Points/ha	P19 - 3000 Points/ha	F16 - 800 Points/ha
P1 - 2500 Points/ha	F7 - 1000 Points/ha	P20 - 3500 Points/ha	F17 - 700 Points/ha
P2 - 2000 Points/ha	F8 - 1400 Points/ha	P21 - 2000 Points/ha	F18 - 800 Points/ha
RGN - 800 Points/ha	F9 - 1300 Points/ha	P22 - 3500 Points/ha	M4 - 650 Points/ha
B1 - 1200 Points/ha	F10 - 1500 Points/ha	P23 - 2000 Points/ha	B50 - 800 Points/ha
B2 - 1200 Points/ha	FRI - 800 Points/ha	P24 - 2300 Points/ha	B51 - 750 Points/ha
B3 - 1200 Points/ha	B29 - 1000 Points/ha	B35 - 1200 Points/ha	B52 - 800 Points/ha
B4 - 1500 Points/ha	B30 - 1200 Points/ha	RS1 - 2000 Points/ha	B53 - 850 Points/ha
B5 - 1400 Points/ha	B31 - 2500 Points/ha	B37 - 1000 Points/ha	B54 - 850 Points/ha
B6 - 1500 Points/ha	B32 - 4000 Points/ha	B38 - 3200 Points/ha	B55 - 850 Points/ha
B7 - 1200 Points/ha	B33 - 5000 Points/ha	B39 - 1800 Points/ha	B56 - 850 Points/ha
B8 - 1400 Points/ha	B34 - 5000 Points/ha	RS2 - 2500 Points/ha	B57 - 850 Points/ha
B9 - 1800 Points/ha	CAR - 1500 Points/ha	RS3 - 2500 Points/ha	F19 - 700 Points/ha
B10 - 1800 Points/ha	D6S - 3000 Points/ha	RS4 - 4000 Points/ha	F20 - 750 Points/ha
B11 - 1400 Points/ha	LR1 - 2200 Points/ha	RS5 - 4000 Points/ha	M3 - 700 Points/ha