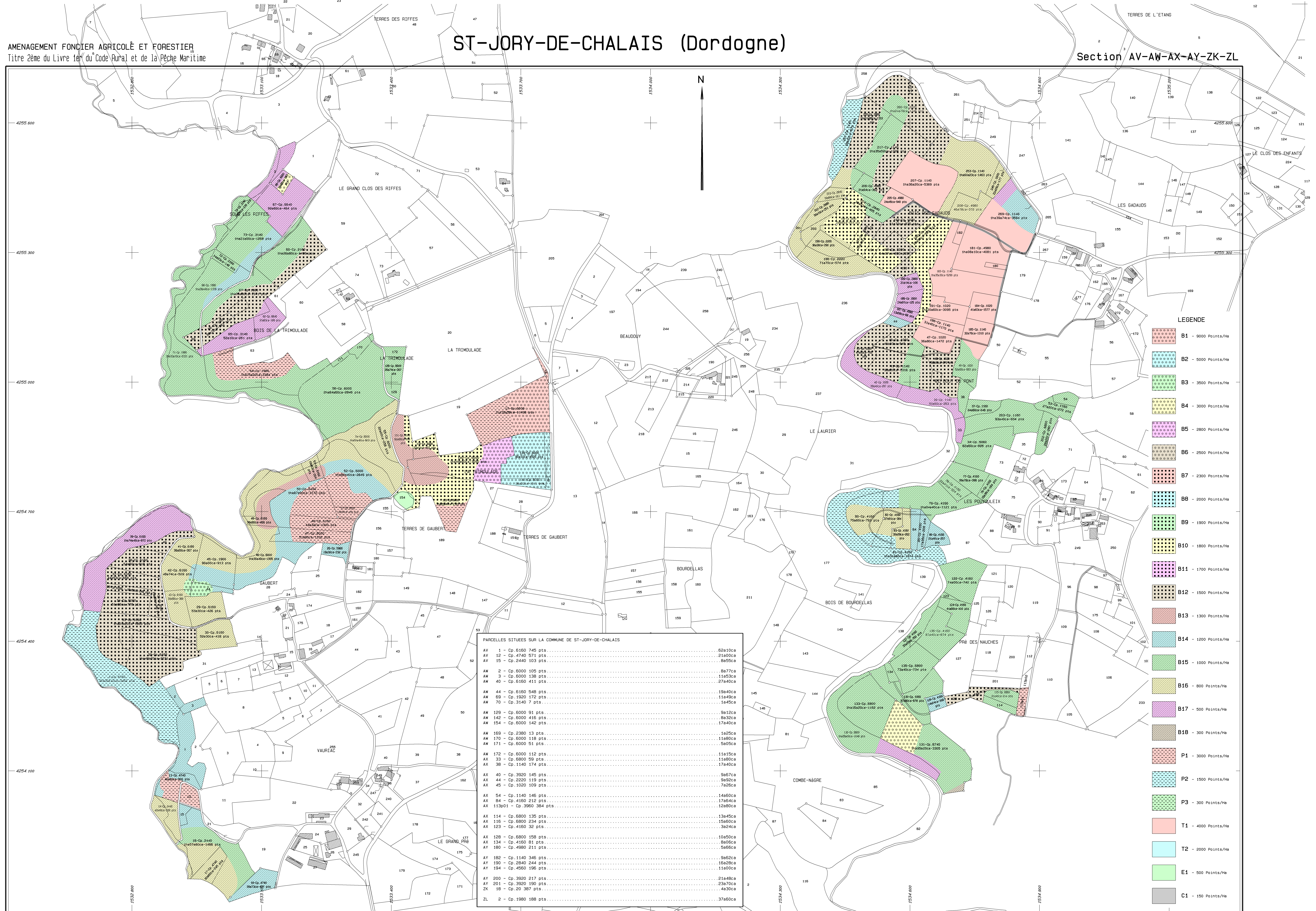


AMENAGEMENT FONCIER AGRICOLE ET FORESTIER
Titre 2ème du Livre Ier du Code Rural et de la Pêche Maritime

ST-JORY-DE-CHALAIS (Dordogne)

Section AV-AW-AX-AY-ZK-ZL



LEGENDE

	B1 - 8000 Points/ha
	B2 - 5000 Points/ha
	B3 - 3500 Points/ha
	B4 - 3000 Points/ha
	B5 - 2800 Points/ha
	B6 - 2500 Points/ha
	B7 - 2300 Points/ha
	B8 - 2000 Points/ha
	B9 - 1900 Points/ha
	B10 - 1800 Points/ha
	B11 - 1700 Points/ha
	B12 - 1500 Points/ha
	B13 - 1300 Points/ha
	B14 - 1200 Points/ha
	B15 - 1000 Points/ha
	B16 - 800 Points/ha
	B17 - 500 Points/ha
	B18 - 300 Points/ha
	P1 - 3000 Points/ha
	P2 - 1500 Points/ha
	P3 - 300 Points/ha
	T1 - 4000 Points/ha
	T2 - 2000 Points/ha
	E1 - 500 Points/ha
	C1 - 150 Points/ha

PARCELLES SITUÉES SUR LA COMMUNE DE ST-JORY-DE-CHALAIS

AV 1 - Cp. 6190 745 pts.	62310ca
AV 12 - Cp. 4740 971 pts.	21305ca
AV 15 - Cp. 2440 103 pts.	8e55ca
AK 2 - Cp. 8000 105 pts.	8p77ca
AK 3 - Cp. 6000 138 pts.	11a53ca
AK 40 - Cp. 6160 411 pts.	27a40ca
AK 44 - Cp. 6160 548 pts.	19a40ca
AK 69 - Cp. 1920 170 pts.	11a49ca
AK 70 - Cp. 3140 7 pts.	1a45ca
AK 109 - Cp. 6000 91 pts.	9a12ca
AK 142 - Cp. 6000 418 pts.	8a32ca
AK 154 - Cp. 6000 140 pts.	17a40ca
AK 169 - Cp. 2380 13 pts.	1a27ca
AK 170 - Cp. 6000 118 pts.	11a80ca
AK 171 - Cp. 6000 51 pts.	5e05ca
AK 172 - Cp. 6000 112 pts.	11a15ca
AX 37 - Cp. 6800 59 pts.	11a80ca
AX 38 - Cp. 1140 174 pts.	17a40ca
AX 40 - Cp. 3920 145 pts.	5e67ca
AX 44 - Cp. 2220 119 pts.	3a22ca
AX 45 - Cp. 1020 109 pts.	7a28ca
AX 54 - Cp. 1140 146 pts.	14a60ca
AX 84 - Cp. 4190 212 pts.	17a64ca
AX 113051 - Cp. 3860 384 pts.	12a86ca
AX 114 - Cp. 6800 135 pts.	13a45ca
AX 118 - Cp. 6800 234 pts.	15a80ca
AX 123 - Cp. 4190 32 pts.	13a24ca
AX 120 - Cp. 6800 158 pts.	15a55ca
AX 134 - Cp. 4190 81 pts.	8e06ca
AY 180 - Cp. 4990 211 pts.	5e66ca
AY 182 - Cp. 1140 346 pts.	9e82ca
AY 190 - Cp. 3840 244 pts.	18a02ca
AY 194 - Cp. 4560 196 pts.	11a00ca
AY 200 - Cp. 3920 217 pts.	21a48ca
AY 201 - Cp. 3920 190 pts.	23a70ca
ZK 18 - Cp. 20 387 pts.	4a30ca
ZL 2 - Cp. 1900 198 pts.	37a60ca

Plan établi en 2022
par M. Stéphane DEVOUGE
géomètre-expert agréé

